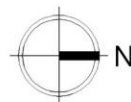
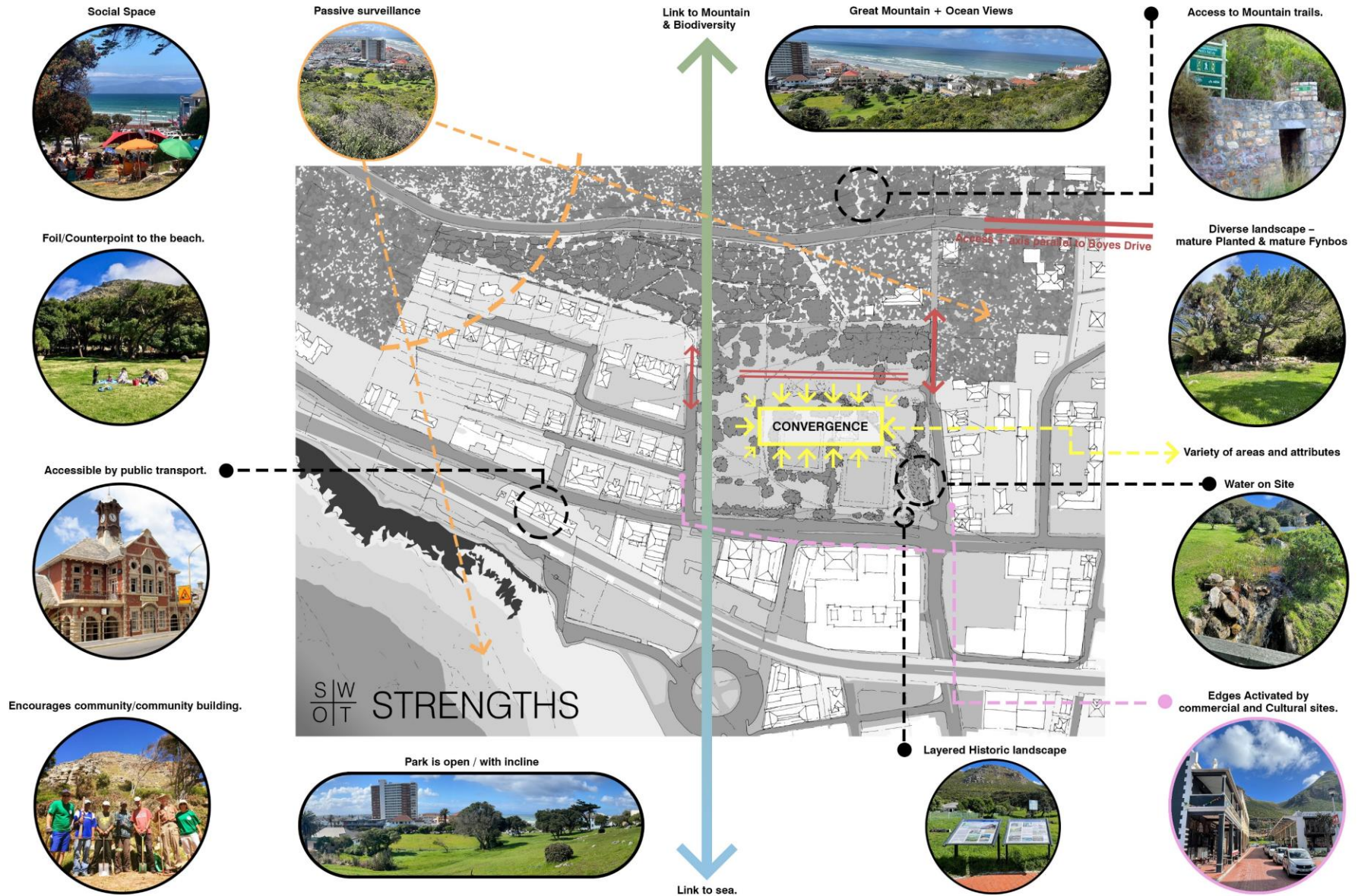


An aerial photograph of a coastal area. In the foreground, there is a dense green forest. In the middle ground, a large, modern, multi-story building stands out. The background shows a wide beach, the ocean with waves, and a clear blue sky with scattered white clouds.

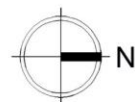
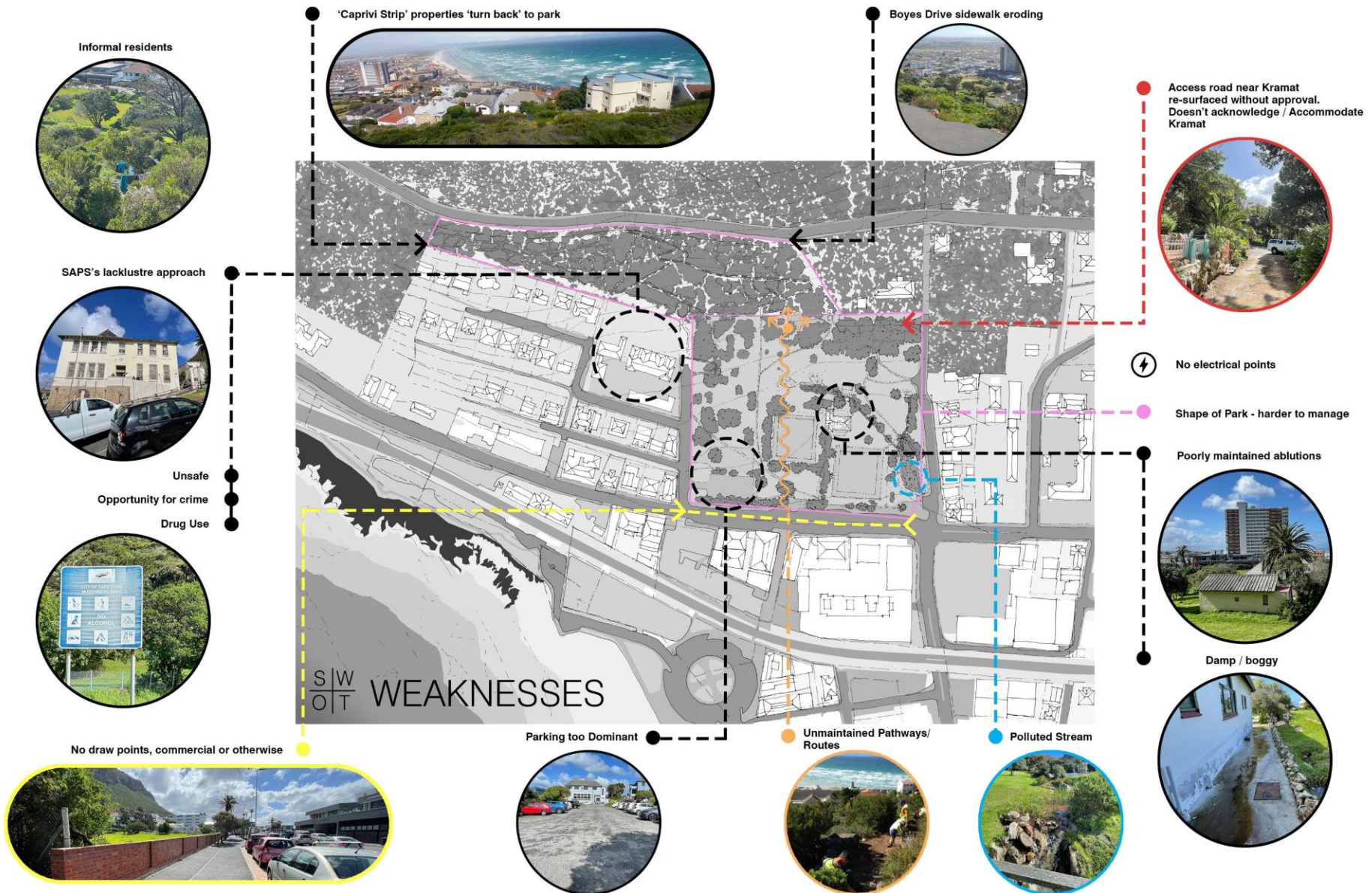
MUIZENBERG PARK DESIGN COMMITTEE WORKSHOP #2



SWOT – STRENGTHS



SWOT – WEAKNESSES



SWOT – OPPORTUNITIES

SAPS building was a school



Stage & Amphitheatre



Space to commune



The artistic nature of Muizenberg




Wheelchair accessible Botanical garden/ fynbos museum



Pine tree cluster linked to Kramat



Boyes drive sidewalk could link into park.

 Potable water points/ Electrical point

Wheelchair accessible

Old Clubhouse converted to Restaurant / Café



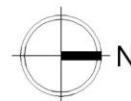
New unique Opportunities:

[illegible]

Income Generating opportunity



Trail Running Paths



SWOT – THREATS

Unsociable use / littering / drugs / prostitution



Growing informal Occupation



Time / Fashionable Fads quickly fall into disuse



Strong South-Eastern Winds

No balustrade



Proximity of Roads



?

Potentially Missing unique Opportunities

Climate Change



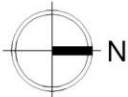
Mountain Fires



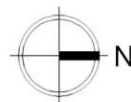
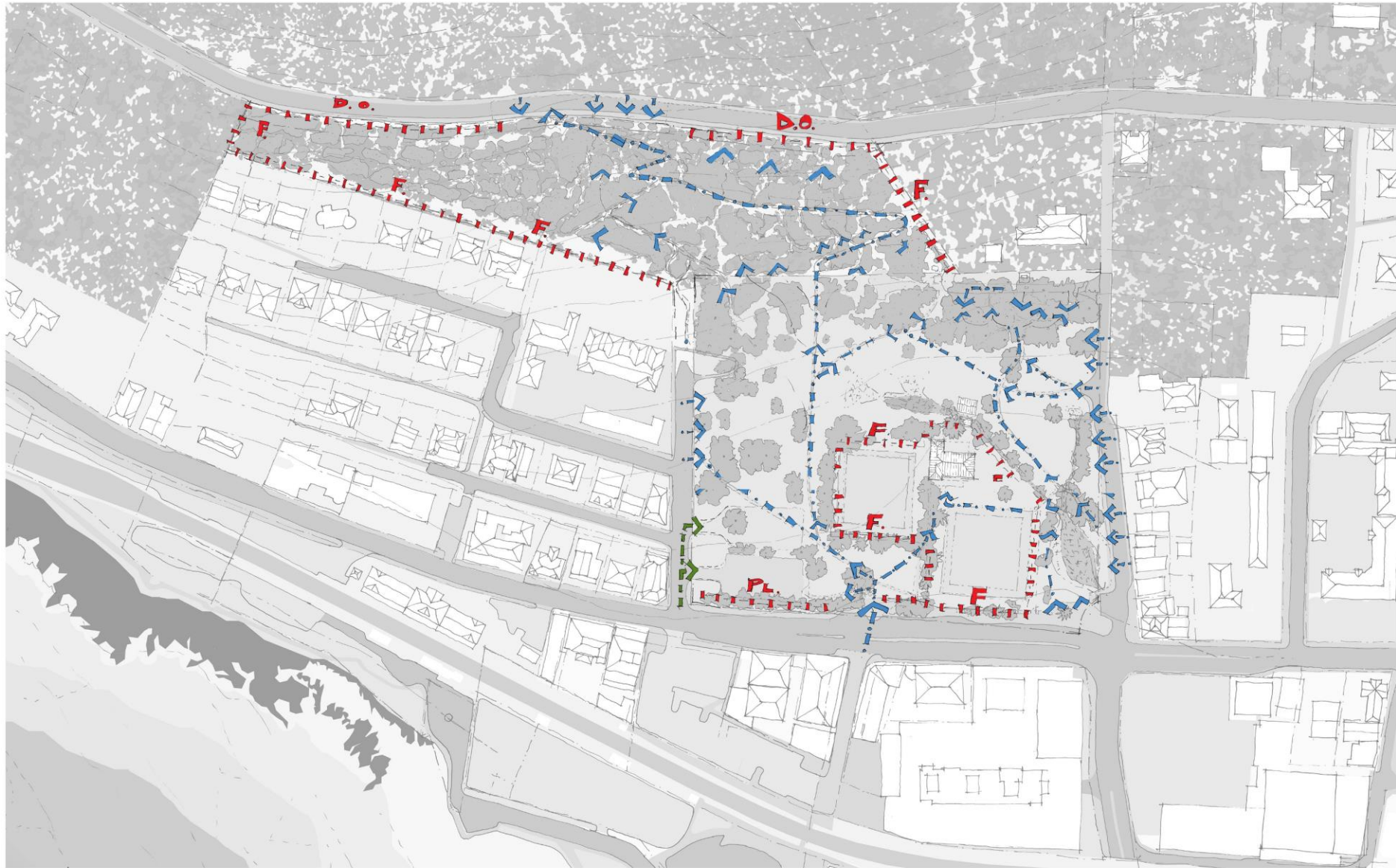
Flooding



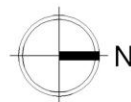
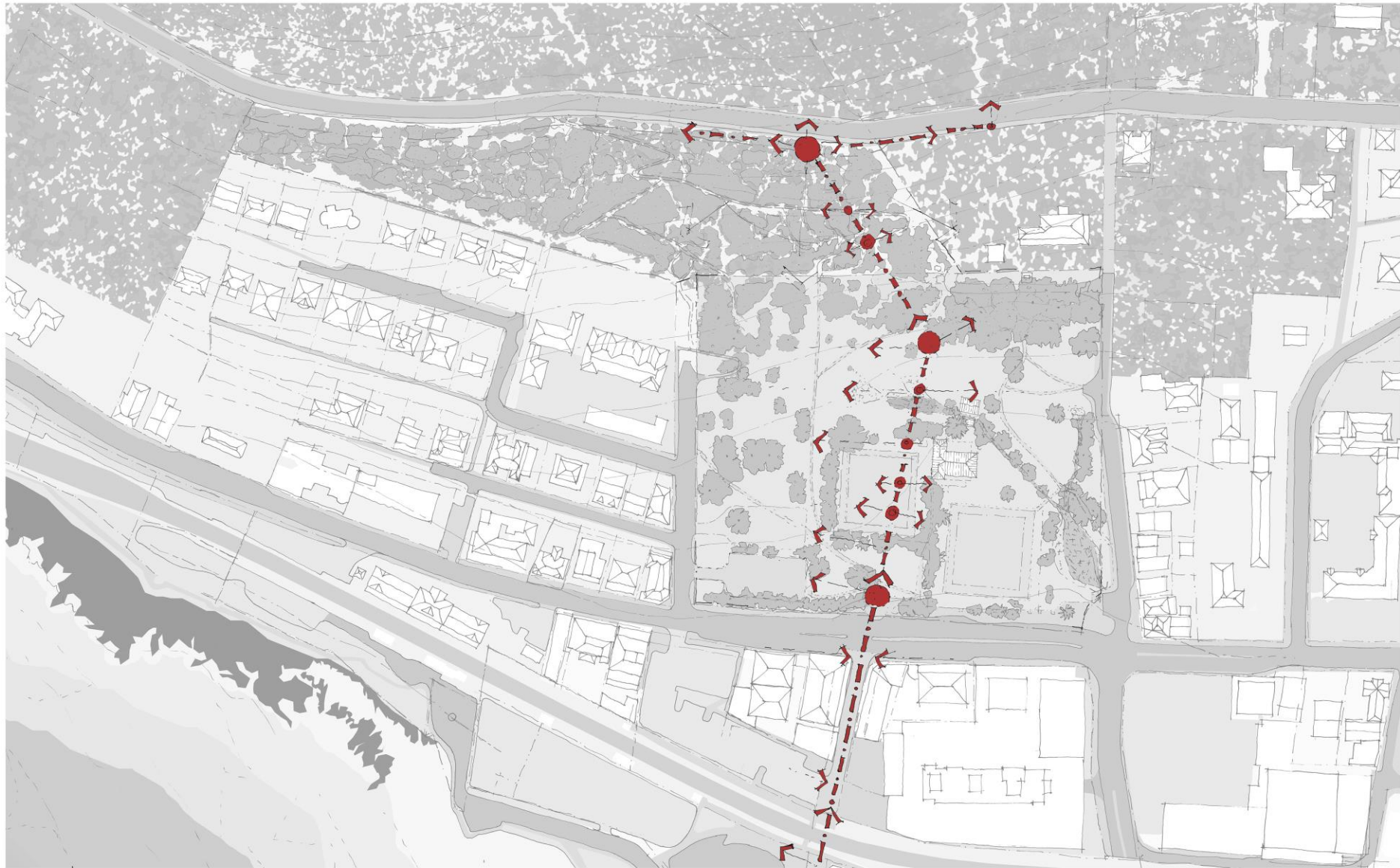
Mountain Erosion



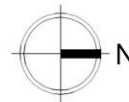
EDGE CONDITON



THE 'SPINE'



PROPOSED DEVELOPMENT ZONES



DESIGN DEVELOPMENT

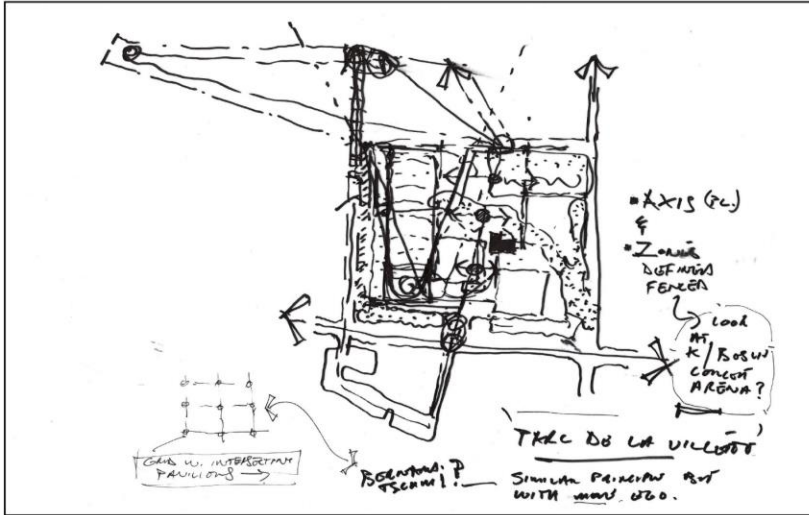


Figure 1.

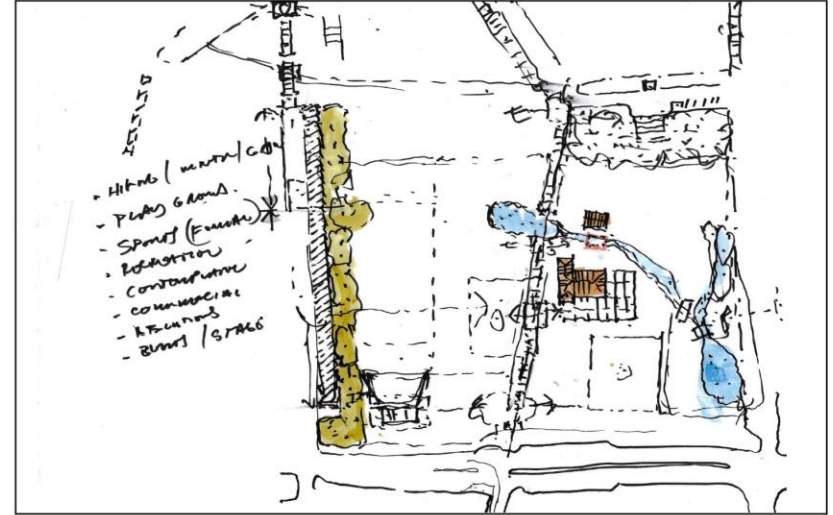


Figure 2.

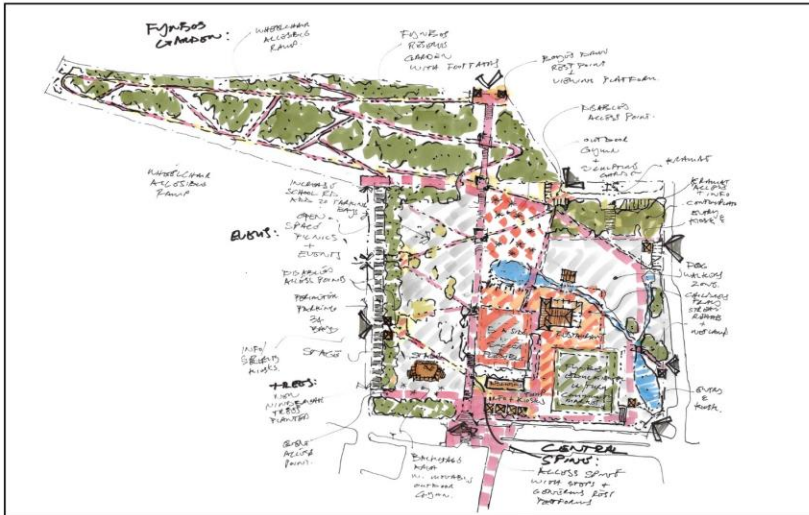


Figure 3.

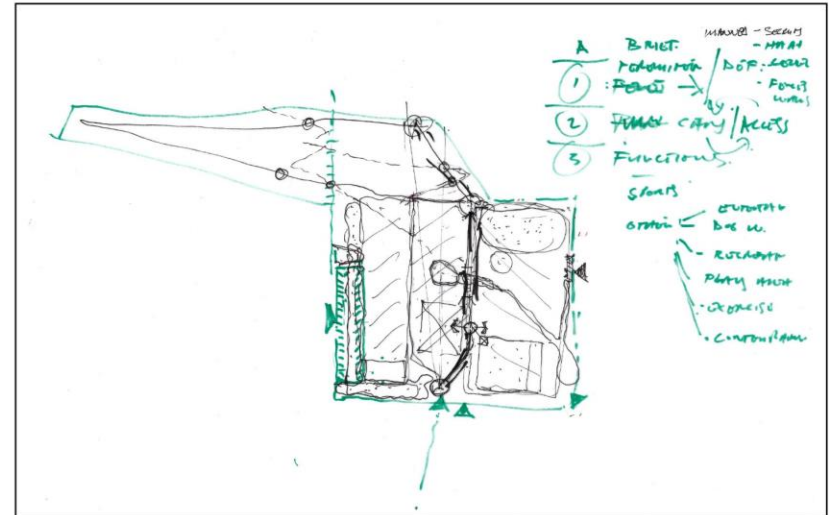
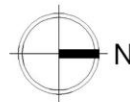
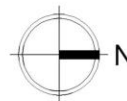


Figure 4.



PROPOSED ZONING DIAGRAM



PROPOSED DRAFT - CONCEPT #1

